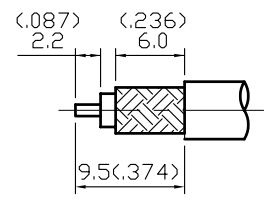
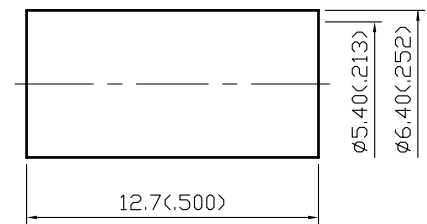
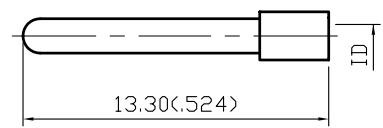
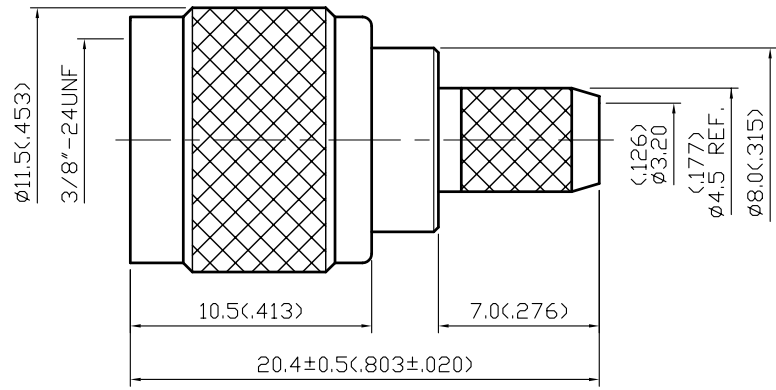


TYPE	ID
A	$\phi 1_{-0}^{+0.1} \langle .039_{-0}^{+0.004} \rangle$
B	$\phi 1.100 \langle .043 \rangle$



STRIPPING DIMENSION

NOTES: UNLESS OTHERWISE SPECIFIED

1. BODIES: BRASS PER JIS-C3604
2. CENTER CONTACT: BRASS PER JIS-C3604
3. CRIMP FERRULE: BRASS PER JIS-C2700
4. PART TO BE CLEAN AND FREE OF BURRS

APPROVED

by \_\_\_\_\_ DATE: \_\_\_\_\_

NO	DESCRIPTION	MATERIAL	Q'TY	FINISH
6	CRIMP FERRULE	BRASS	1	NICKEL 100 μ" MIN.
5	SHELL	BRASS	1	NICKEL 100 μ" MIN.
4	WASHER	BRASS	1	NONE
3	INSULATION	POM	1	NONE
2	CENTER CONTACT	BRASS	1	GOLD
1	BODY	BRASS	1	NICKEL 100 μ" MIN.

DESCRIPTION		MINI-UHF STRAIGHT PLUG CRIMP			
製圖	DRAWN	TOLERANCE	品名		日期
	Elvis		.X	±0.2	
檢圖	CHECK	APPROVAL	單位		DWG.NO.
	Monica		.XX	±0.1	
認定	APPROVAL	MONICA	比例		SCALE
	Monica		ANGLE	±5°	