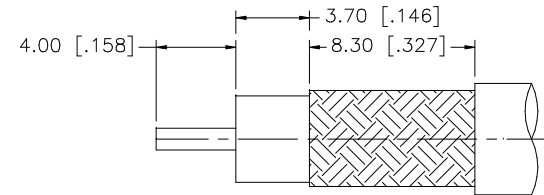
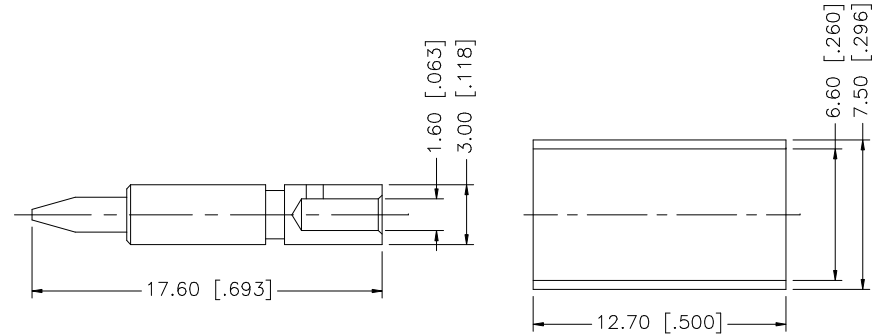
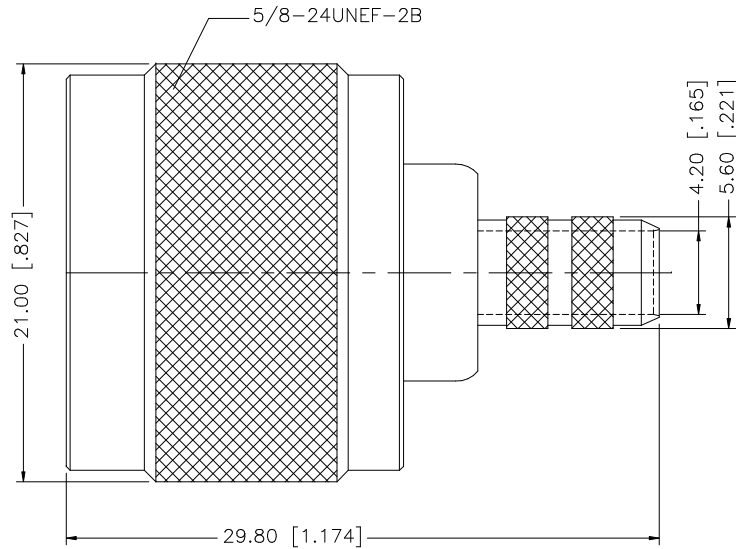


REV.	DATE	DESCRIPTION
A	04/31/03	UPDATE DRAWING FORMAT



RECOMMENDED
CABLE STRIPPING DIM'S

NOTE:

1. CRIMPED FERRULE
HEX CRIMP SIZE .255"
2. CRIMPED CONTACT PIN
HEX CRIMP SIZE .100"

8					UNLESS OTHERWISE SPECIFIED DIMENSIONS ARE IN MILLIMETERS. DIMENSIONS IN [] ARE IN INCHES AND FOR CUSTOMER REFERENCE ONLY. UNLESS OTHERWISE SPECIFIED TOLERANCES FOR MILLIMETERS ARE: 0.5 - 8mm ± 0.20mm 8 - 30mm ± 0.40mm 30 - 120mm ± 0.50mm UNLESS OTHERWISE SPECIFIED TOLERANCES FOR INCHES ARE: .020 - .315 = ± 0.007" .315 - 1.180 = ± 0.015" 1.180 - 4.724 = ± 0.020"	APPROVALS	DATE	<h1 style="color: blue; text-align: center;">Amphenol Connex</h1>								
7				DRAWN		G.R.S.	04/31/03									
6				CHECKED				PART DESCRIPTION <h2 style="text-align: center;">N CRIMP PLUG (FOR LMR-240, RG-8/X)</h2>								
5				ISSUED												
4	FERRULE	COPPER	NEXCOTE	1	SHEET	1 OF 1	PART NO. <h2 style="text-align: center;">172135</h2>									
3	CONTACT PIN	BRASS	GOLD	1	CAD FILE	C:/172/172135.DWG					DWG. NO.	172135.DWG	REV.	A	SIZE	A
2	INSULATOR	TEFLON	NATURAL	1												
1	BODY	BRASS	NEXCOTE	1												
DESCRIPTION				MATERIAL	FINISH	QTY	DO NOT SCALE DRAWING									