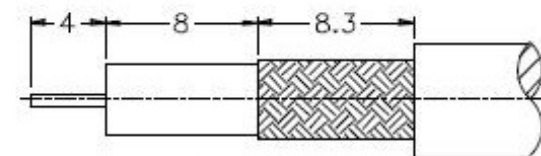
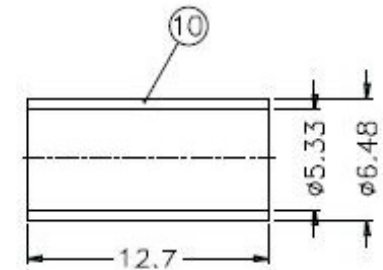
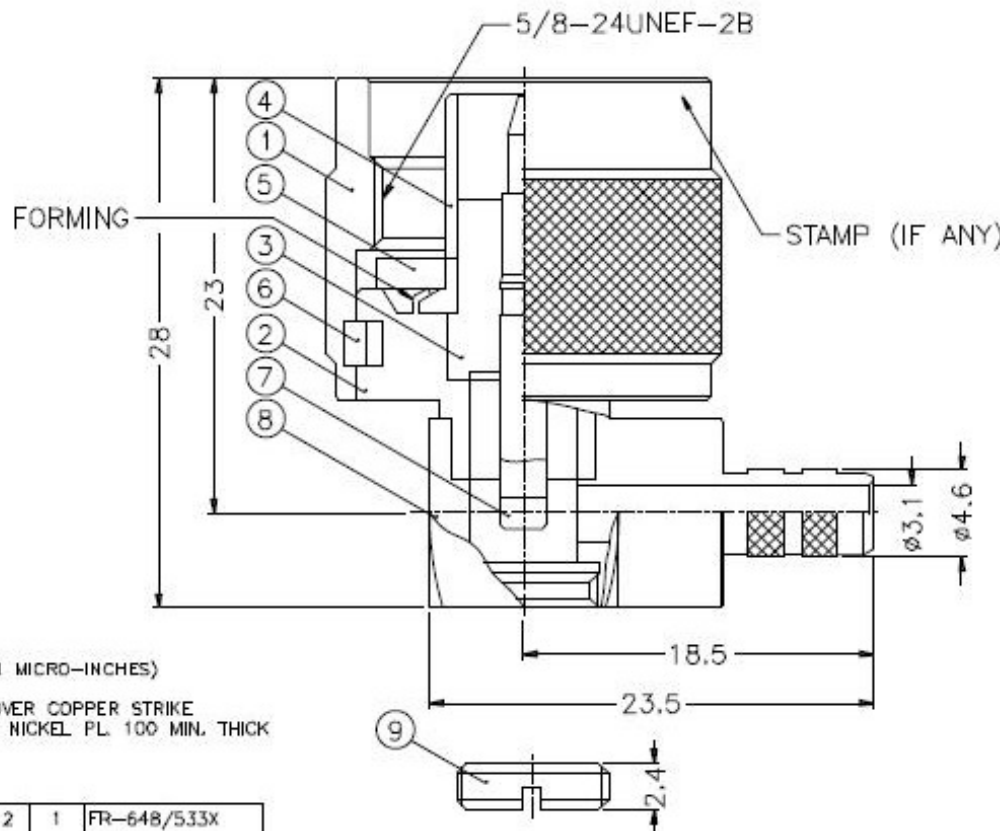


| REVISIONS |      |                              |
|-----------|------|------------------------------|
| ISS       | ZONE | DESCRIPTION\PER REDUEST\DATE |
|           |      |                              |



RECOMMENDED  
CABLE STRIPPING DIM'S



1. CRIMPED FERRULE  
HEX CRIMP SIZE .213"  
2. CONTACT PIN TO SOLDER

- NOTES: FINISH (PLATING THICKNESS IN MICRO-INCHES)
1. BRASS PER QQ-B-626
  2. NICKEL PL. 100 MIN. THICK OVER COPPER STRIKE
  3. GOLD PL. 3 MIN. THICK OVER NICKEL PL. 100 MIN. THICK OVER COPPER STRIKE
  4. PTFE MIL-P-19468

|     |               |          |         |      |                     |
|-----|---------------|----------|---------|------|---------------------|
| 10  | FERRULE       | COPPER   | NOTE 2  | 1    | FR-648/533X<br>127C |
| 9   | NUT           | NOTE 1   | NOTE 2  | 1    | 15687061606-5       |
| 8   | BARREL        | NOTE 1   | NOTE 2  | 1    | N1112A2-8-46<br>/31 |
| 7   | CONTACT PIN   | NOTE 1   | NOTE 3  | 1    | N1112A2-7           |
| 6   | RETAINER RING | SUS 304  | NATURAL | 1    | N5000-7-C           |
| 5   | GASKET        | SILICONE | RED     | 1    | GS-156/8X15         |
| 4   | CONTACT BODY  | NOTE 1   | NOTE 2  | 1    | N5000-5             |
| 3   | INSULATOR     | NOTE 4   | NATURAL | 1    | N1112A2-3           |
| 2   | BODY          | NOTE 1   | NOTE 2  | 1    | N1112B1-2           |
| 1   | SHELL         | NOTE 1   | NOTE 2  | 1    | N5000-1-B           |
| NO. | DESCRIPTION   | MATERIAL | FINISH  | Q'TY | DRAWING NO.         |

DIMENSIONS ARE IN MILLIMETERS  
UNLESS OTHERWISE SPECIFIED  
TOLERANCES

|           |        |
|-----------|--------|
| 0.5-6     | = ±0.2 |
| 6-30      | = ±0.4 |
| 30-120    | = ±0.6 |
| 120-315   | = ±1   |
| 315-1000  | = ±1.6 |
| 1000-2000 | = ±2.4 |

|          |                       |           |
|----------|-----------------------|-----------|
| PART NO. | N1112B1-001-NT3G-1-50 |           |
| APPROVED | DATE                  | 10-11-01' |
| CHECKED  | DATE                  | 10-11-01' |
| DRAWN    | DATE                  | 10-11-01' |
| FILE NO. |                       |           |

|  |  |
|--|--|
| <b>Amphenol</b>                                |  |
| TITLE N R/A CRIMP PLUG<br>(FOR RG-58/U, 58C/U) |  |
| DRAWING NO. KJ-N1112B1-001-NT3G-58U-50         |  |
| ITEM NO.                                       |  |