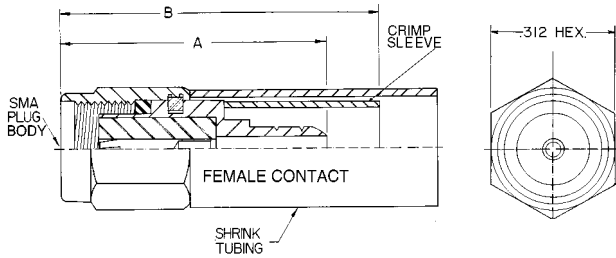
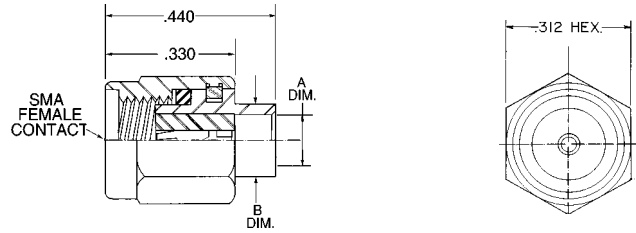


## Reverse Polarity SMA Connectors Per FCC Part 15.203 Requirement



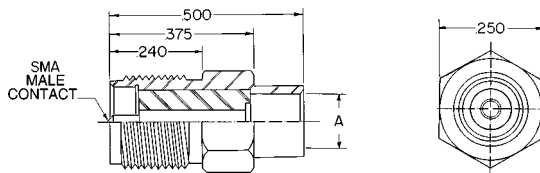
PART NO.	CABLE	A DIM.	B DIM.
<b>352-1 PZ</b>	RG-55/U, 142, 223, 400	.690	.945
<b>352-2 PZ</b>	RG-58/U 141, 303	.690	.945
<b>352-3 PZ</b>	RG-174/U, 179 187, 188, 316	.655	.815

**POLARIZED 352 PZ**  
MALE BODY  
FEMALE CONTACT  
FLEXIBLE CABLE



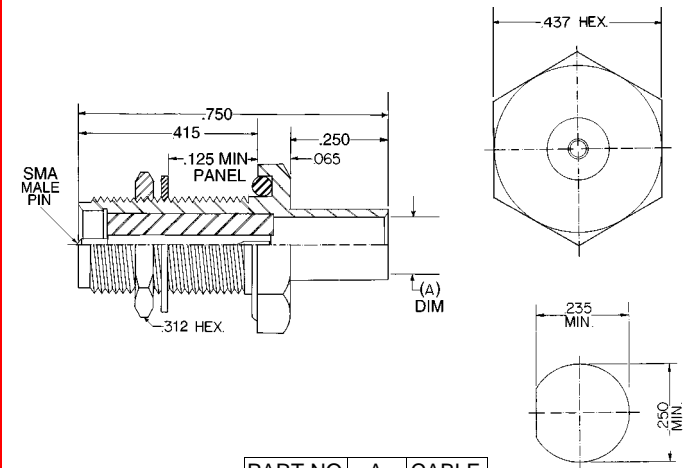
PART NO	A	B	CABLE
<b>300-7 PZ</b>	.143	.187	141
<b>301-1 PZ</b>	.087	.120	085
<b>301-3 PZ</b>	.049	.120	047

**POLARIZED 301 PZ**  
POLARIZED SEMI RIGID  
MALE BODY  
FEMALE CONTACT



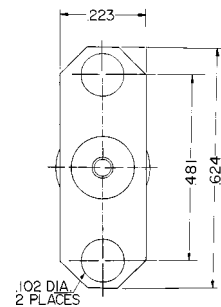
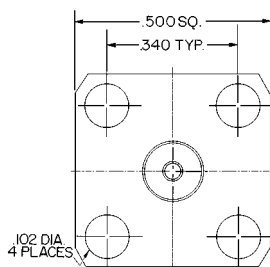
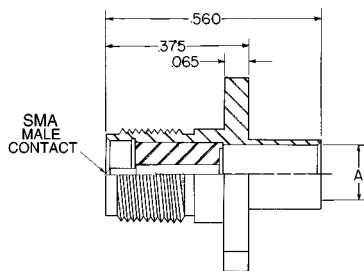
PART NO	A	CABLE
<b>302 PZ</b>	.143	.141
<b>302-1 PZ</b>	.088	.085
<b>302-2 PZ</b>	.049	.047

**POLARIZED 302 PZ SMA**  
FEMALE BODY MALE CONTACT



PART NO	A	CABLE
<b>304 PZ</b>	.143	.141
<b>304-1 PZ</b>	.0875	.085

**POLARIZED 304 PZ**  
FEMALE BODY  
MALE CONTACT



PART NO	A	CABLE
<b>303 PZ</b>	.143	.141
<b>303-1 PZ</b>	.0875	.085
<b>303-2 PZ</b>	.048	.047
<b>307 PZ</b>	.143	.141
<b>307-1 PZ</b>	.0875	.085
<b>307-2 PZ</b>	.048	.047

**POLARIZED 303 PZ** 4 HOLE SMA FLANGE  
**POLARIZED 307 PZ** 2 HOLE SMA FLANGE  
FEMALE BODY MALE CONTACT